



2064 Eastman Avenue, Suite 113, Ventura, CA 93003-7787
Tel 805/339.9696 – Toll Free 866/gotowti – Fax 805/339.0932
www.gotowti.com – www.wirelesstech.com

MODEL DA-5830
Parabolic Dish Antenna



The rugged prime focus parabolic reflector and prime focus T-feed offer exceptional reliability at an affordable price. The 5.8 GHz antenna's optimized dipole feed delivers superior pattern performance and has a subreflector built directly into the feed.

These antennas provide excellent electrical performance mated with a rugged mechanical design to deliver a high value solution to your antenna requirements.

FEATURES

- Professional grade durability ensures installation longevity.
- Lightweight construction and integrated design minimizes installation time.
- Exceptional pattern performance ensures optimized link budgets.
- Antenna blends into the horizon.

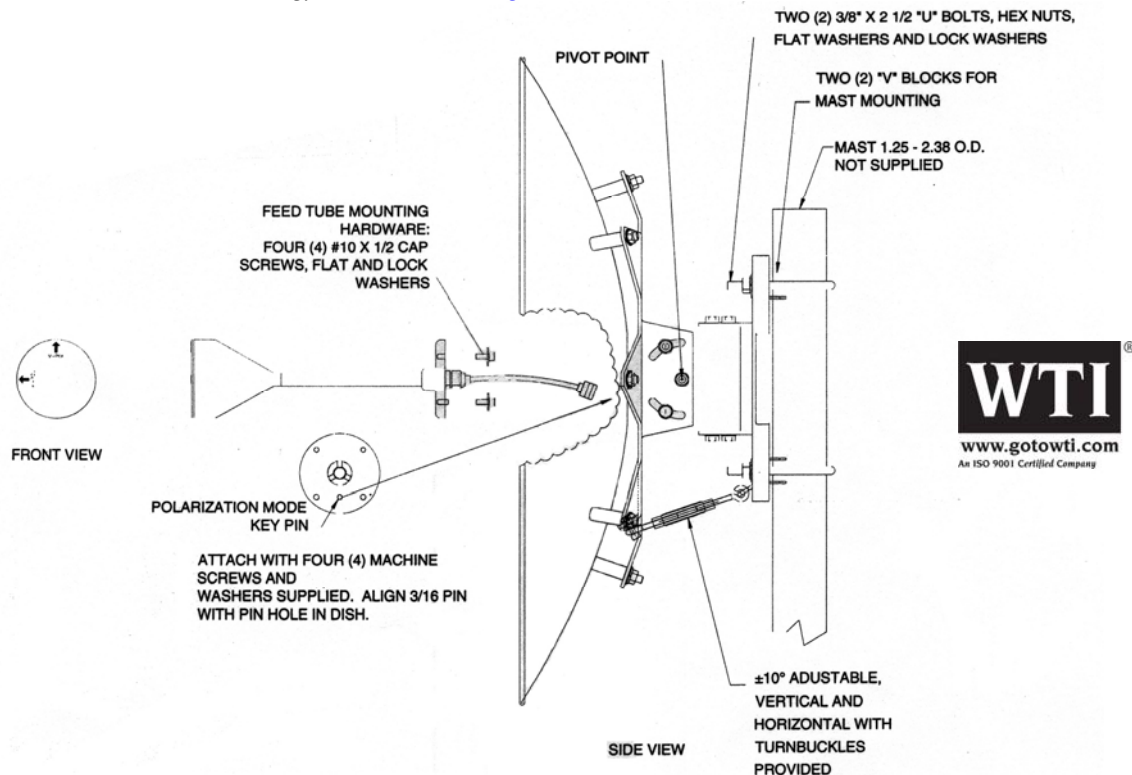
ELECTRICAL		MECHANICAL	
Frequency	5700-5875 MHz	Output Connector	"N" type female
Gain	30 +/- 1 dBi	Mounting O.D. Pipe	1.25" - 2.375" (32-60mm)
Polarization Isolation	>25 dB	Vertical Tilt	
Side lobe Suppression	>18 dB	Top Pole Mount	0-66o
3dB Beamwidth	6°	Side Pole Mount	0-22o
10dB Beamwidth	12°	Wind Load @ -30° F	
Front/Back Ratio	>35 dB	Operational	80 mph, 43.4 lbs (19.7 kg)
VSWR Typical	1.8:1	Survivable	140 mph, 133 lbs (60.5 kg)
Pigtail Extension	RG8 13"	Reflector Type	Spun aluminum parabolic
		Reflector Material	Powder coated aluminum
		Reflector Color	White on white
		Dimensions	24" (0.406 m)
		Weight	9 lbs. (4.08 kg)

MADE IN THE USA • 2 Year Warranty

Due to Wireless Technology, Inc. (WTI) continuing efforts to engineer the best product that is most responsive to our customer's needs, the above specifications are subject to change without notice. All products are trademarks or registered trademarks of their respective holders. The use of these marks does not suggest any association between these companies.

Mounting Instructions: Parabolic Dish Antenna – DA-5830

Wireless Technology, Inc. (WTI) www.gotowti.com



- 1.) Remove four (4) #10 cap screws, lock and flat washers from the hardware bag. Position feed tube as shown, aligning polarization pin with hole in dish. Insert cable through hole and install screws with 5/32" hex key and tighten.
- 2.) Remove two (2) "U" bolts, and "V" blocks, four (4) 3/8" hex nuts, lock and flat washers from the hardware bag. Position dish assembly to mast as shown and install upper "U" bolt first, then install lower "U" bolt and tighten.
- 3.) Adjust angle, loosen six (6) 7/16" hex head machine screws at each pivot point, and screw turnbuckles out or in, until desired position is obtained.
- 4.) After the dish is aligned, make sure the 7/16" hex head machine screws are tightened securely.

NOTE: The dish is shipped setup for vertical polarization. A decal indicating vertical polarization is provided on the rear surface of the star mounting plate.

- 5.) Horizontal polarization is obtained by removing the "U" bolts and rotating (viewing from the rear of the dish) 90 degrees clockwise. The plugged drain holes will now be on the bottom. Remove the plugs and place them in the drain holes that are now on the side.

NOTE: It is important to keep the drain holes on the bottom open.

